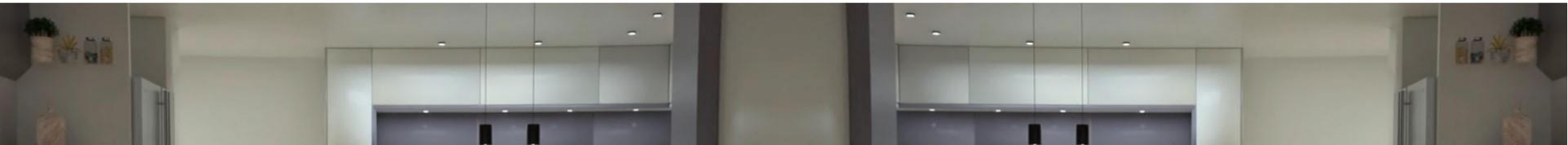
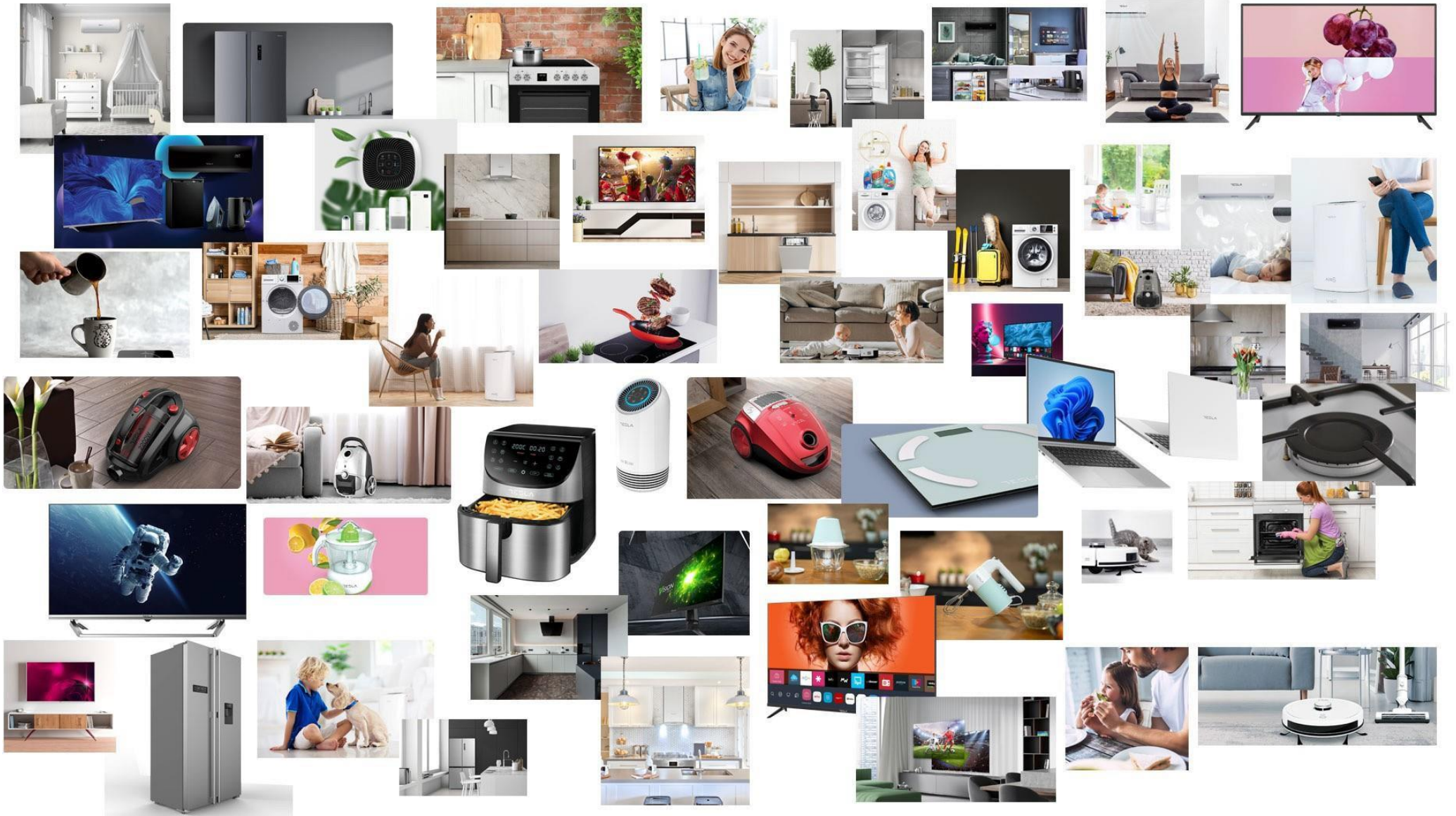


**TESLA**  
Technology for all





TESLA is part of COMTRADE GROUP, a dynamic and solid group of technology companies, with 30 years of experience in innovation and development of some of the most advanced software in the world.

Founded as a software engineering company, it has evolved to become a provider of world-class technological products and services, with infrastructure and offices in 10 countries.



**3000+**  
EMPLOYEES



**US\$500 M**  
IN ANNUAL BUSINESS  
VOLUME



**30 AÑOS**  
OF EXPERIENCE

A decade ago, COMTRADE GROUP created TESLA, for the development of electronic equipment and household appliances.

Its products are successfully sold in more than 30 countries on 5 continents, with a 10% market share.

**4500+**  
RETAILERS

**3000+**  
EMPLOYEES

**US\$325 M+**  
TURNOVER

**60+**  
SUPPLIERS

**23.000+**  
PRODUCTS

# OUR INSPIRATION

Nikola Tesla, as one of the greatest scientists of all time,  
He is an inspiration to many, especially around technology.

In developing our TESLA brand, we were guided by its idea of providing technology for everyone.



# OUR INTENTION

... is to respond to the needs and desires of our consumers, through constant product innovations and our growing global network.

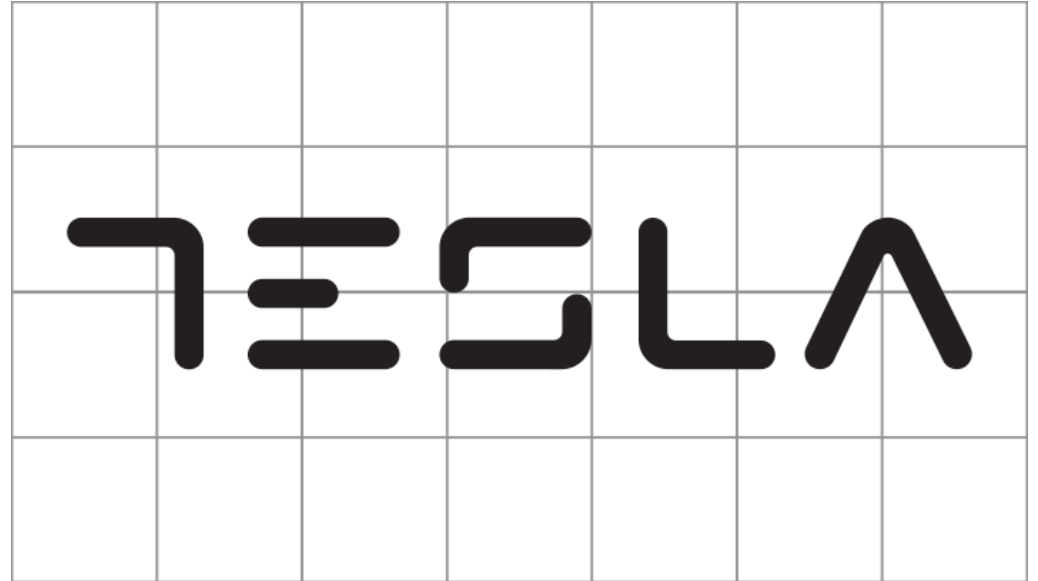
They see in TESLA a brand they trust and need to keep in mind in their daily lives.



# Firm Legal Basis

Protecting our brand is an important issue for us.

TESLA enjoys protection in the whole world and our brand portfolio is constantly growing.



What does TESLA bring to the cell phone industry?



# Tesla **EXPLR 9**

The most powerful technology you have ever seen



# Forget the charger **NOW!**

Feel free to go everywhere with an 8300 mAh battery: enjoy up to 70 hours of calls or listening to music, or up to 20 hours of YouTube without connecting your phone to the charger.

This means weekends at the beach or pure enjoyment of entertainment without being “tied” to a charger.

Plus, the standby battery can last up to over a month!



# We design it **TO RESIST!**

Your Tesla EXPLR 9 is designed to survive extreme weather conditions, drops, and other unexpected circumstances.

It operates in outdoor temperatures of  $-40$  to  $+70^{\circ}\text{C}$  and has also been tested to withstand a drop from a height of 1.5m or immersion in fresh water at a depth of 1.5m for up to 30 minutes.



# You will go with speed **OF LIGHTNING**

Powerful features including 8GB  
RAM + 128GB and 256GB  
ROM storage

An Octa-Core processor that  
makes your games and  
applications as fast as lightning.

Move seamlessly and quickly from one task to another,  
wherever you are. Forget about slowness: when you're  
fast, your phone needs to run at the same speed to  
keep up with you.



# The image is as you remember it, **THE MAGIC**

With a brightness of 500 nits and a refresh rate of 90 Hz, the image of this phone is sharp.

This means you can easily see the screen in any environment, as well as explore all the photos you took during the exciting days of adventures and experiences to remember. While we're at it, your Tesla EXPLR 9 also takes great photos at night or in macro mode.



# Enjoy its elegance **LIVING YOUR ADVENTURES**

Live all your adventures, without losing elegance.

Created to be strong and look strong, Tesla EXPLR 9 is your best companion in every new experience.

Thanks to an earth-inspired gray palette, you will never look out of place and will fit perfectly into all your environments, whether it is in mountains, city, beaches, forests or deserts.

A special design also makes it feel great in your hands.





### MAIN FEATURES

Processor	MediaTek Helio G95 - MTK6785, Octa-Core (2x A76 Cortex@2.05 GHz + 6x A55 Cortex@2.0 GHz)
GPU	ARM G76 3EEMC4@900MHz
Operating System	Android™ 11 will be updated to 12
RAM	8 GB
ROM	128 GB
Design	Rugged smartphone with touch screen
SIM Card	Dual nano SIM + microSD 3FF standard
Size	175.7mm/84mm/15.5mm
Battery	8300 mAh / Lithium-ion Polymer
Weight	348g with Battery (built in)
Available colors	Dark grey
Stand-by time	Up to 900h
Talk time 2G	Up to 71h
Talk time 3G	Up to 40h
Talk time VoLTE	Up to 35h
External memory	MicroSD™ up to 256GB
IC [Infrared]	Yes
Proximity sensor	Yes
Ambient light Sensor	Yes
Fingerprint sensor	Yes
E-Compass	Yes

### NETWORK

GSM Quad band 850/900/1800/1900 (Class 12)  
 WCDMA: B1/B2/B4/B5/B8 HSDPA 42.2Mbps DL (Cat 24), HSUPA 11.5Mbps UL (Cat 7)  
 LTE: TDD: B38/B40/B41; FDD: B1/B2/B3/B4/B5/B7/B8/B12/B13/B17/B18/B19/B20/B25/B26/B28(A+8)/B66  
 Bluetooth® 5.0  
 WiFi: 802.11b, 802.11g, 802.11n, 802.11a, 802.11ac

DISPLAY	
Size	6.78"
Type	IPS, OCA lamination, Gorilla III 1.1mm, 7H, 90Hz
Color	16 million
Display resolution	FHD+ (2460*1080)
Multitouch	Yes, 5 points
PHOTO & VIDEO	
Main Camera	64 Megapixels (9280*6944), 1.4*1.4µm, PDAF + AF+FF, auxiliary 20 Megapixels camera, 2MP macro camera. Video record in Full HD 1080P@30fps
Digital Zoom	4X
Flash/Torch	LED
Front Camera	16 Megapixels (4672*3504 pixel), 1.0*1.0 µm FF, Video record Full HD 1080P@30fps
Back Flash	4 LED
MULTIMEDIA	
Stereo FM Radio	Yes
Supported sound formats	MP3, MIDI, AAC, AMR
Supported image formats	JPEG, GIF, PNG, BMP
Supported video formats	3GPP, MP4, 3GP, H.264, H.265 / HEVC
CONNECTIVITY	
Wi-Fi	802.11 a/b/g/n
Tethering	USB, Bluetooth, Access Point Wi-Fi
Bluetooth®	5.0
PORT USB™	USB 2.0 HS/FS, type C
Audio jack	3.5mm
GPS SYSTEM	
GPS	Yes
A-GPS	Yes
Glonass	Yes
Galileo	Yes
Baidou	Yes
LANGUAGES	
All Google supported languages	
GOOGLE™ MOBILE SERVICE	
Applications	PlayStore Maps Youtube YoutubeMusic Chrome Gboard Drive Gmail Duo Photos
BOX CONTENT	
Tesla Explr 9 AC adapter Type A - Type C USB Cable Screen protector SIM Pin Quick Start Guide	
SAR VALUES	
Head	0.267 W/kg
Body	0.370 W/kg

# Why buy A TESLA EXPLR 9?

The main reasons why users decide to buy a Tesla Explr 9 are due to the life of its battery along with the strength and durability of the equipment.

It is an equipment that gives presence and security for those who wear it, in any environment and in any company.

It also satisfies the need to be different, to be apart of the dominant brands.



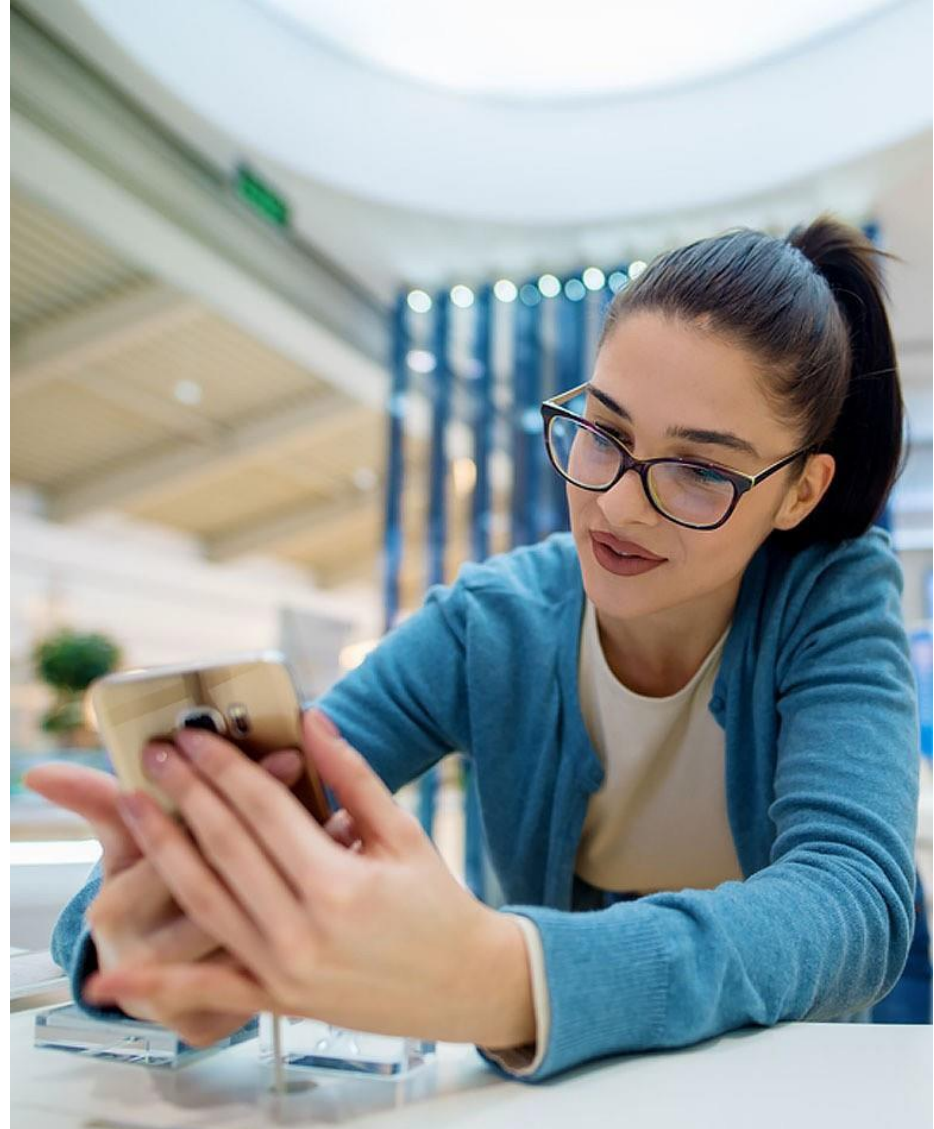
# Who is the buyer OF THE TESLA EXPLR 9?

The typical Tesla Explr 9 customer has an average age between 30 and 60 years old, middle and upper middle class, mainly male and tend to be very busy professionals, merchants, executives

and in constant movement both in his professional and personal life.

It is also bought by mothers who must share phones with their children between the ages of 2 and 12.

The use they give to their mobile device is very intense, so the demand on the battery is very high, and there is also a good chance that the device will receive knocks due to the use that they or their children give it.





# What is the experience that the **TESLA EXPLR 9** offer?

Whoever has a Tesla Explr 9 should feel safe with a high-quality, high-performance product, different to those who carry phones from the usual brands.

That tells you about a person with aspirations, with a desire to succeed, to be different, and who uses technology in a selfless way, without becoming a slave to a low-life battery or delicate equipment that can be damaged by any blow.



# TESLA

Technology for all

Quick to adapt to any situation, we adjust our portfolio quickly, responding to the needs and desires of our clients.

**That's what TESLA is all about.**

